

37 Gatekeeper Close
Newcastle Great Park
Newcastle Upon Tyne
NE13 9EH

Offers Over
£575,000



37 Gatekeeper Close
Newcastle Great Park
Newcastle Upon Tyne
NE13 9EH

- 5 Bed Detached House
- Lounge with Media Wall
- 26' Breakfasting Kitchen
- Cloakroom/WC
- Family Gardens

- Family Accommodation Over 3 Floors
- Separate Study
- En Suite Shower plus Family Bath and Shower Rooms
- Double Garage
- Sought After Location

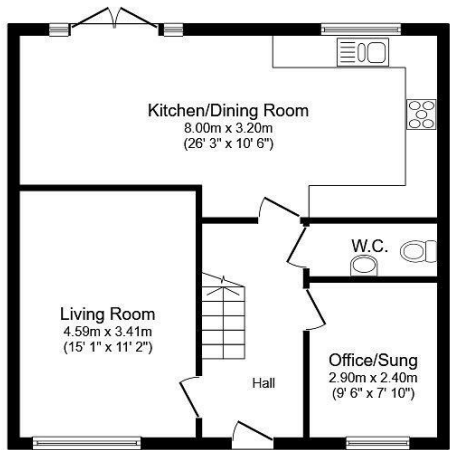




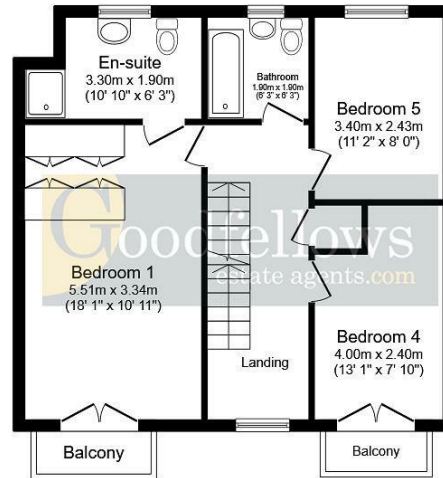


37 Gatekeeper Close, Newcastle Great Park, Newcastle Upon Tyne, NE13 9EH

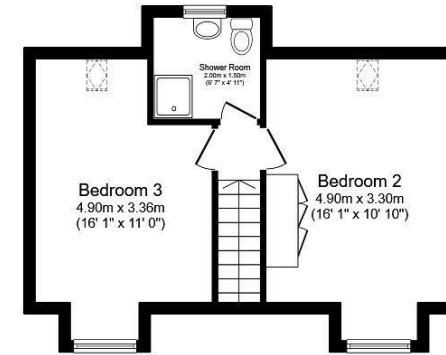




Ground Floor



First Floor



Second Floor

Total floor area: 155.1 sq.m. (1,670 sq.ft.)

This floor plan is for illustrative purposes only. It is not drawn to scale. Any measurements, floor areas (including any total floor area), openings and orientations are approximate. No details are guaranteed, they cannot be relied upon for any purpose and do not form any part of any agreement. No liability is taken for any error, omission or misstatement. A party must rely upon its own inspection(s).



EPC Rating: B
Council Tax Band: F

Whilst every care has been taken to prepare these particulars, they are for guidance purposes only. All measurements are approximate and whilst every care has been taken to ensure their accuracy, they should not be relied upon and potential buyers/tenants are advised to recheck the measurements. The agent has not tested any equipment, services, fixtures or fittings and makes no representation regarding their condition.

CONTACT

2 Middleton South, Newcastle Great Park,
Newcastle upon Tyne, NE13 9BJ

E: greatpark@goodfellowsestateagents.com
T: 0191 2848100

